

EETI Mac Touch Driver Installation Guide

Version: 1.21.4107
Operation System: Mac OSX 10.7.4 or more
Release Date: 10-07-2013

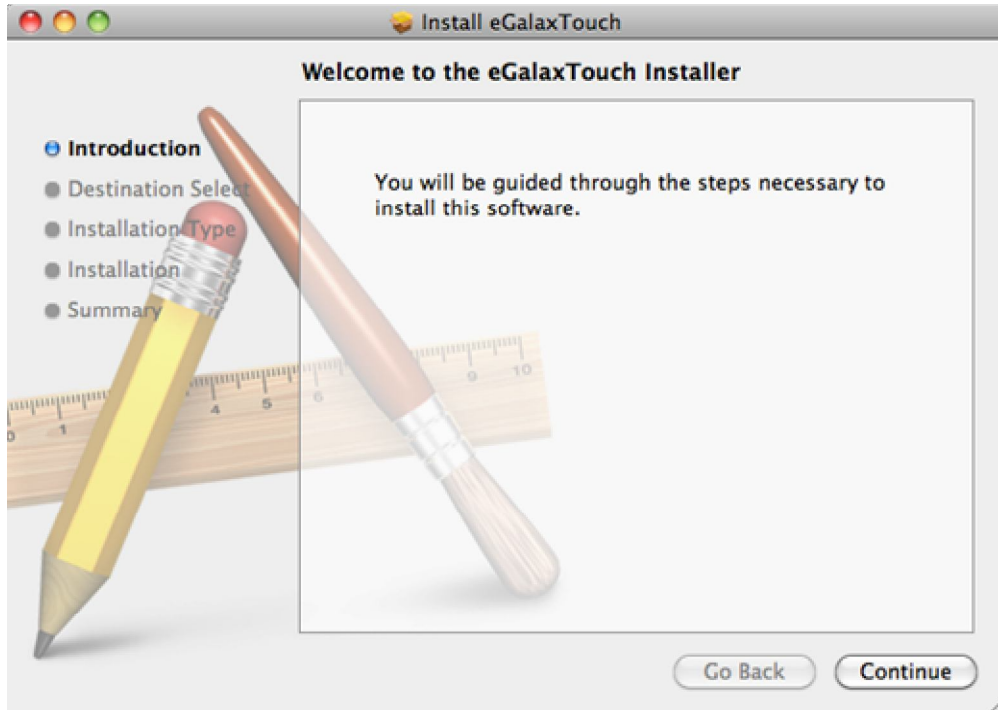
Contents

1. Installation Procedure	2
2. eGalaxTouch Utility Setting	4
3. Uninstall Driver	6

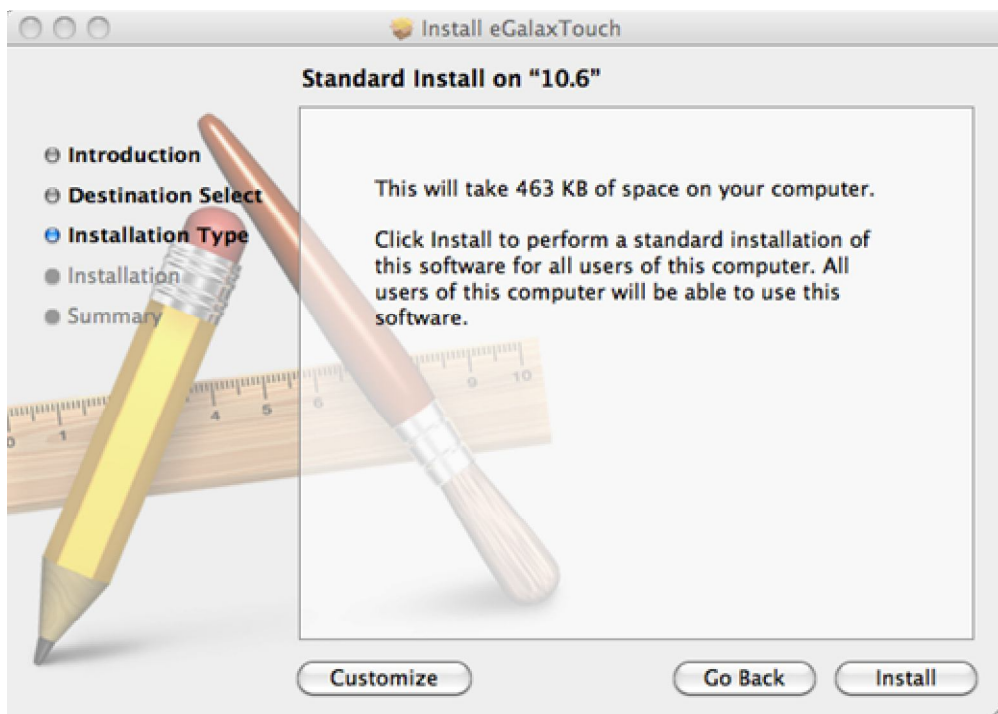
1. Installation Procedure

Please unzip the driver package and launch TouhKit Installation procedure.

1.1 Please unzip the driver package and launch TouhKit Installation procedure.

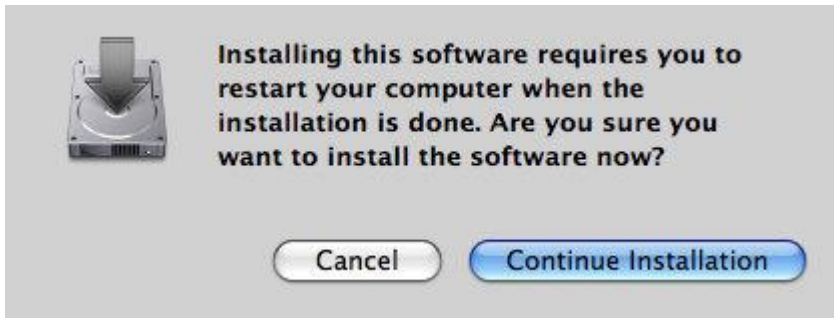


1.2 Select Install button to continue.

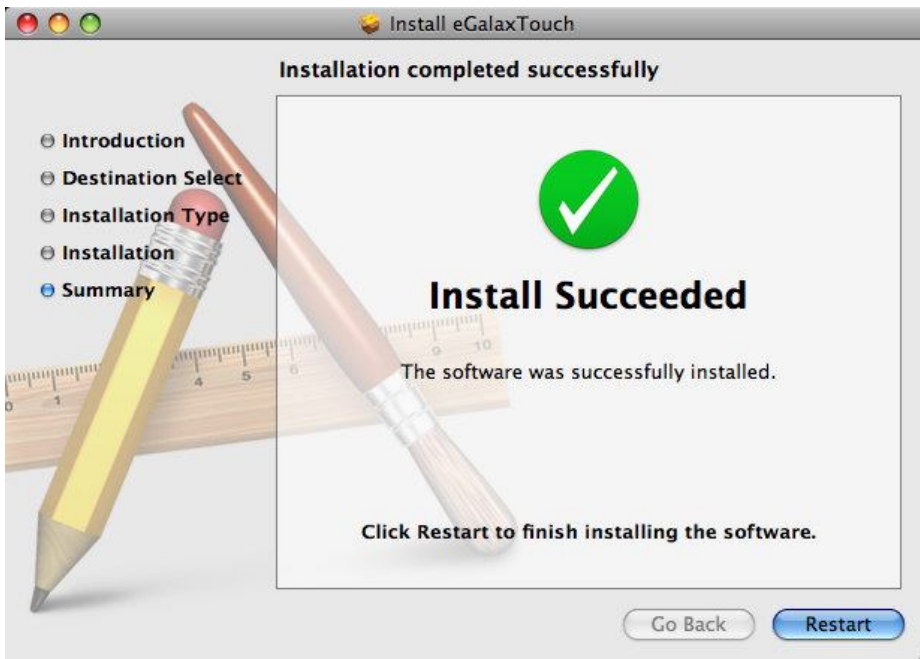


1.3 Select destination to install if you want to install on different hard disk, than

select Continue Installation.



1.4 When installation success, press Restart to restart your computer.

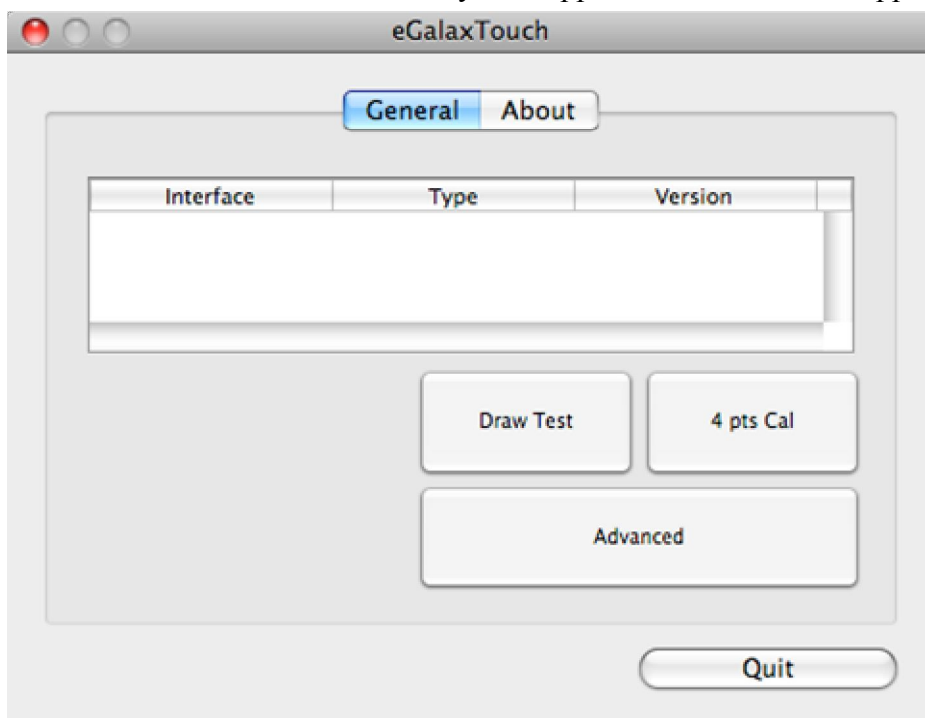


1.5 Restart Computer.

2. eGalaxTouch Utility Setting

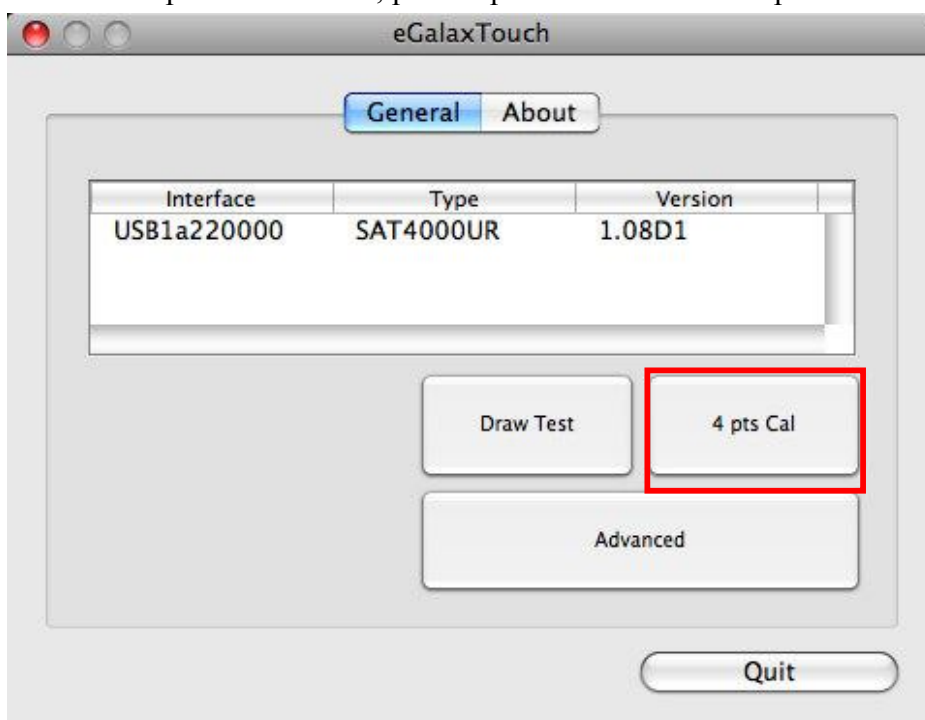
2.1 Launch eGalaxTouch

You can launch eGalaxTouch Utility via \Appliation\eGalaxTouch.app

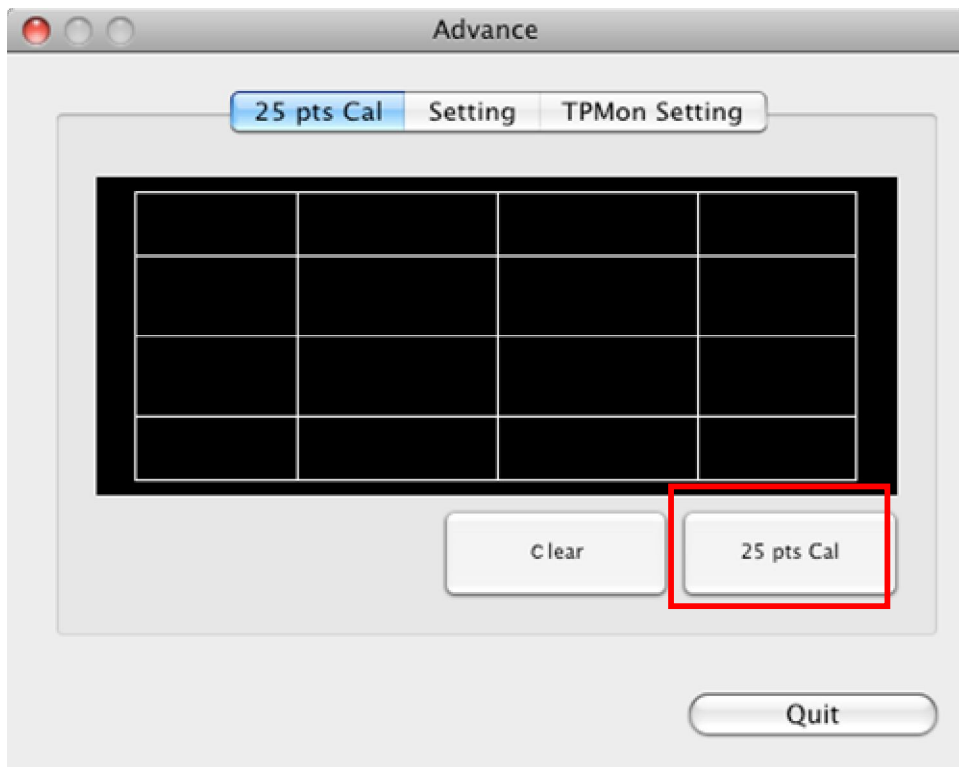


2.2 Calibration

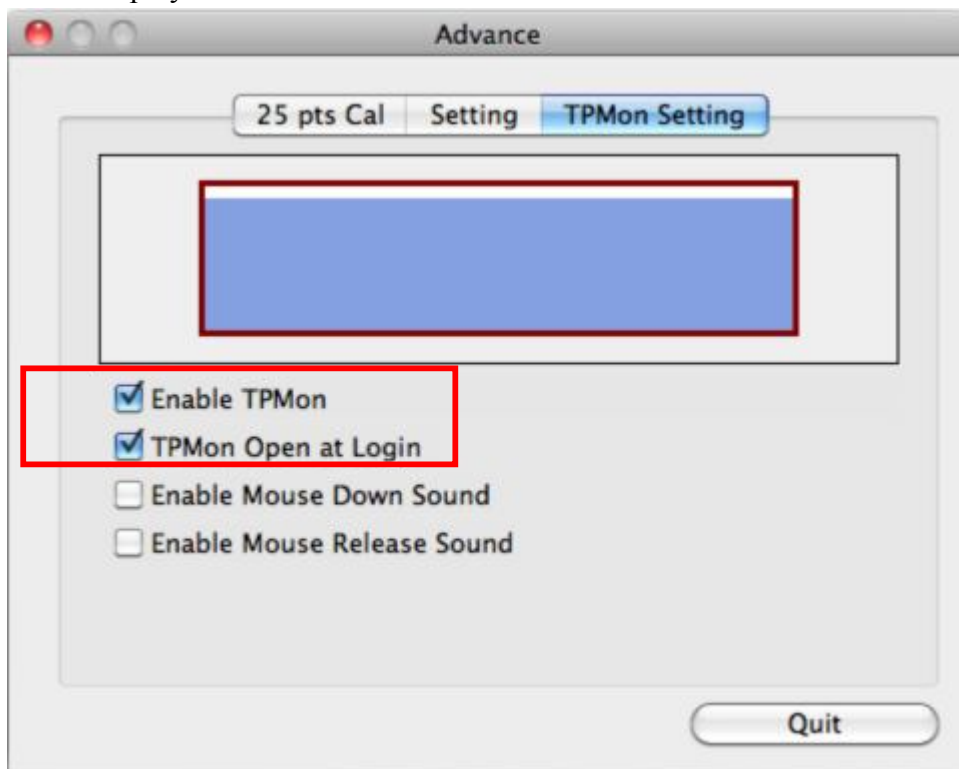
To launch 4 point calibration, press 4 pts Cal to execute the procedure.



To launch 25 points calibration, press Advance->25 pts Cal



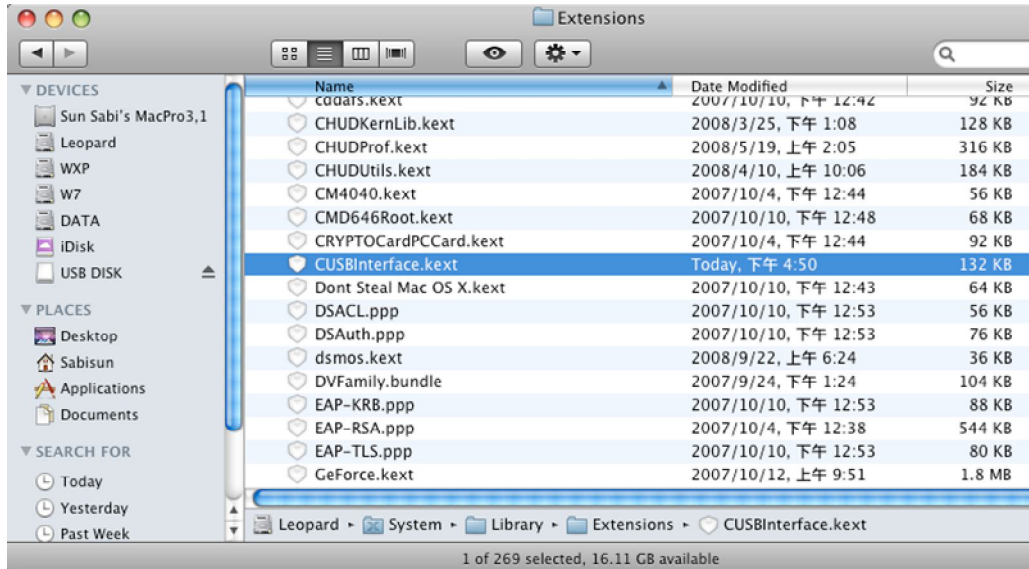
2.3 We suggest that users enable TPMon Open at Login in eGalaxTouch utility. TPMon will monitor display setting changes and notify touch driver. Users use dual monitor display must enable TPMon.



3. Uninstall Driver

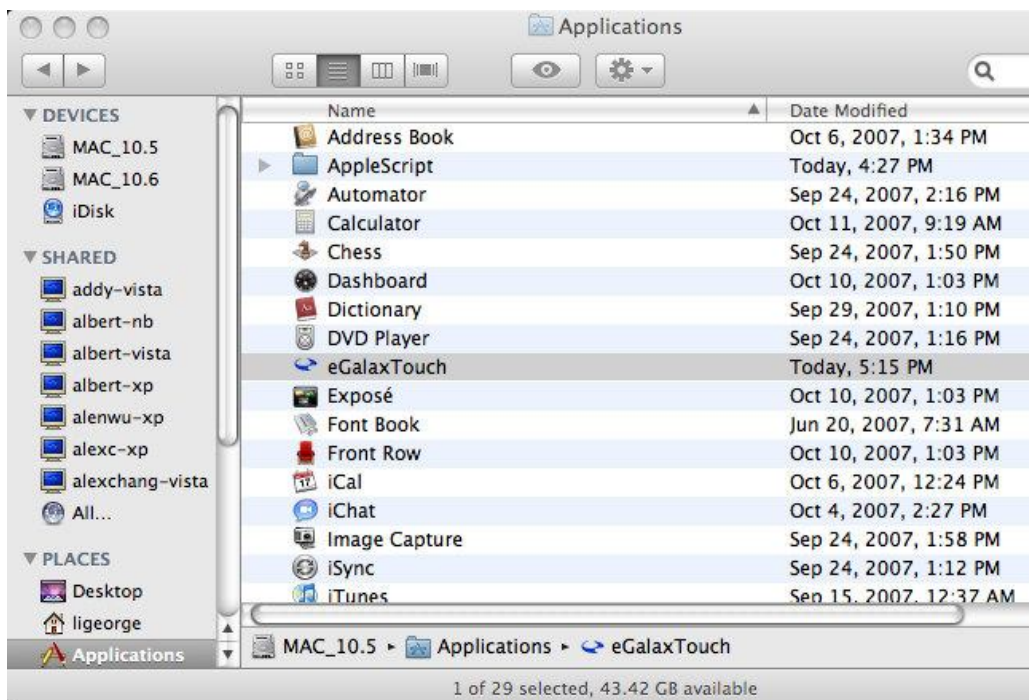
3.1 Delete kernel extension file

Delete /System/Library/Extensions/CUSBInterface.kext



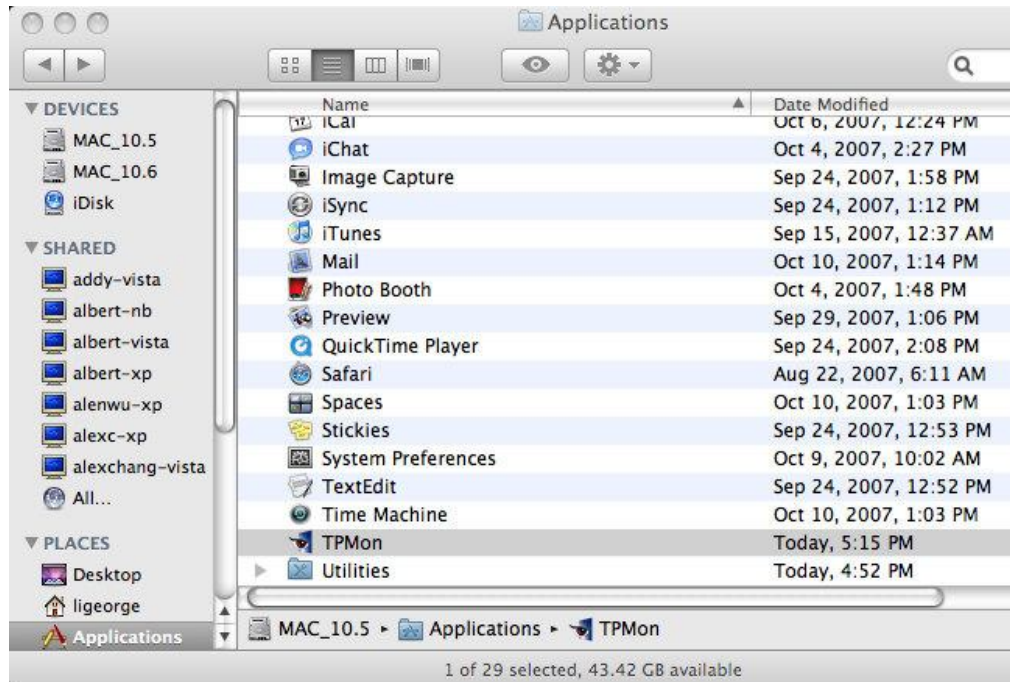
3.2 Delete eGalaxTouch Utility

Delete /Applications/eGalaxTouch.app



3.3 Delete TPMon Utility

Delete /Applications/TPMon.app



3.4 Delete Install Package

Delete /Library/Receipts/cusbinterfacroot.pkg

Delete /Library/Receipts/egalaxtouchroot.pkg

Delete /Library/Receipts/tpmonroot.pkg

